

33/3-9 Terminus Street Castle Hill NSW



2

Prime Office Space in the Heart of Castle Hill with 2 parking

Position your business at the centre of one of Sydney's most sought after commercial precincts with this prime office opportunity.

Located directly opposite Castle Towers Shopping Centre and moments from Castle Hill Metro Station, this exceptional 80m² office suite offers outstanding convenience, visibility and accessibility in the heart of the thriving Castle Hill CBD.

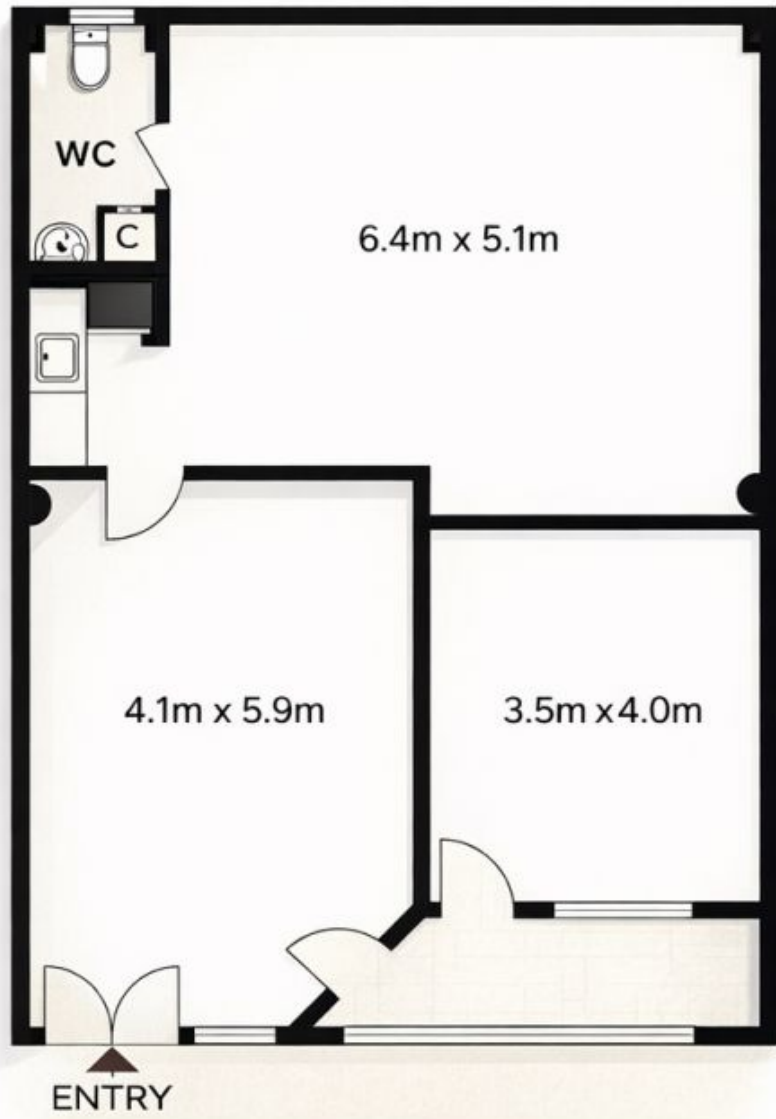
Set within the highly regarded Garden Piazza complex, the property benefits from strong foot traffic, excellent natural light and immediate access to a wide range of surrounding amenities including banks, cafés, medical facilities and major transport links.

[For full version visit the website](#)

Guide \$690,000 -
\$750,000

Type : Offices
Building Size : 80 sqm
View : <https://www.lumby.com.au/8653720>

Kate Lumby
02 9651 2788



FIRST FLOOR