



8 Vision Valley Road Arcadia NSW

 4  2

SOLD BY LUMBY Elevated Original Home on Arable 5 Acres

\$ 3,225,000

SOLD BY KATE LUMBY 0414 620 222
LUMBY REAL ESTATE

Type : Acreage/Semi-Rural
Land Size : 5 Acres
View : <https://www.lumby.com.au/8566566>

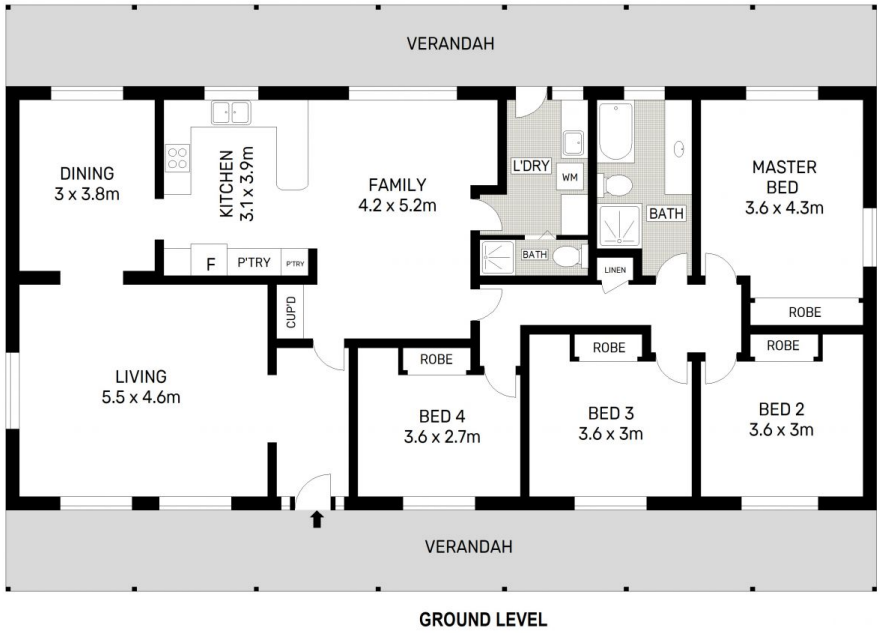
A rare opportunity awaits in one of Arcadia's most tightly held acreage locations. Positioned high on the block, this original family home enjoys an elevated setting with tranquil rural outlooks, capturing natural light and cooling breezes throughout the seasons.

Offering 5 acres of pristine, fully arable land with 2 street frontages, this property is the perfect canvas ideal for those seeking space, privacy and the potential to create an acreage lifestyle estate.

Whether you renovate, extend or rebuild, the land layout

[For full version visit the website](#)

Kate Lumby
02 9651 2788



SITE PLAN

8 VISION VALLEY ROAD, ARCADIA

Dimensions are approximate. All information contained herein is gathered from sources we believe reliable. However, we cannot guarantee its accuracy and interested persons should rely on their own enquiries