



85 Mile End Road Rouse Hill NSW

 3  2  12

SOLD BY LUMBY... RECORD RESIDENTIAL SALE PRICE FOR ROUSE HILL..

'3,111m2 Site in the Heart of Rouse Hill'

Offered for the first time in 51 years, this large 3,111m2 parcel of land is a rare opportunity in a prime location providing the opportunity for subdivision (STC) or to capitalise on the position of this site.

The property currently has a single level 3 bedroom home with ducted vacuum, inground swimming pool, cabana and bar area along with a large remote garage.

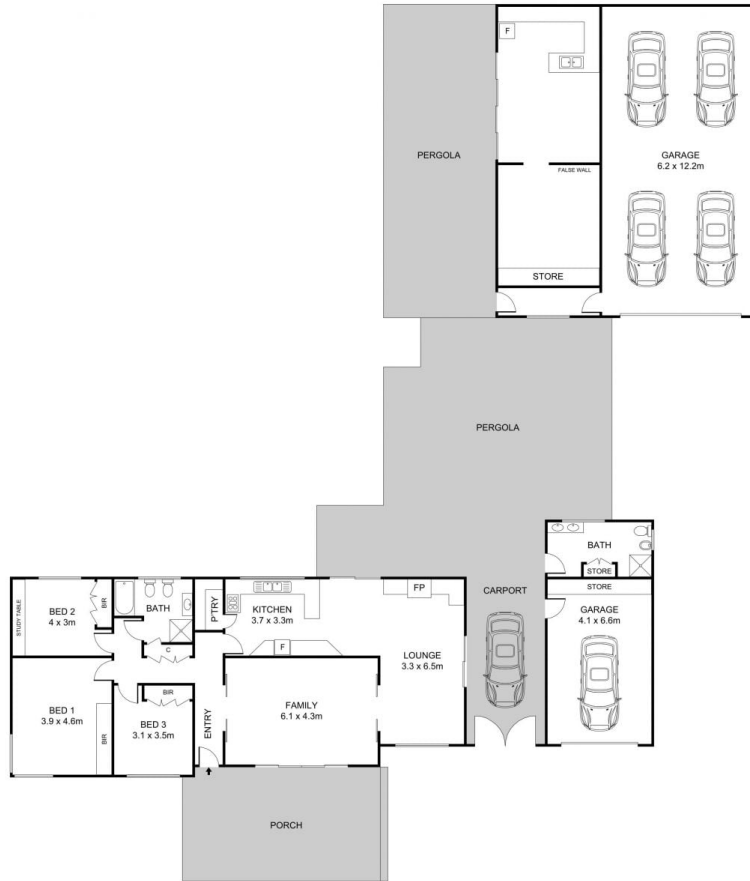
Within close proximity to Rouse Hill shopping centre, local schools, train station and amenities.

Large 3,111m2 block of land

[For full version visit the website](#)

Type : House
Land Size : 3111 sqm
View : <https://www.lumby.com.au/8332082>

Kate Lumby
02 9651 2788



0 1 2 3 4 5 METRES

85 Mile End Road, Rouse Hill

Disclaimer: Dimensions are approximate and should only be used as a guide they are not to scale and no liability will be accepted



Lumby Hampson
Real Estate Since 1968