



1 Blacks Road Arcadia NSW

 4  2  2

## SOLD PRIOR TO AUCTION

**\$ 3,000,000**

This impressive 6.6 acre arable estate is a wonderful opportunity to build a brand-new home.

**Type** : House

**Land Size** : 26709.3 sqm

**View** : <https://www.lumby.com.au/7996478>

The property has an existing cottage and two sheds providing current rental income which you could retain and have an income stream in addition to building a new home.

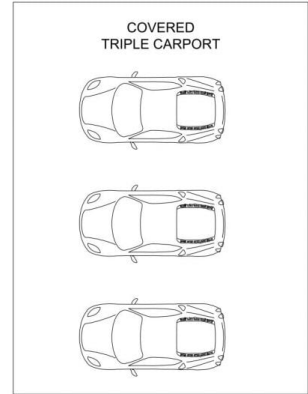
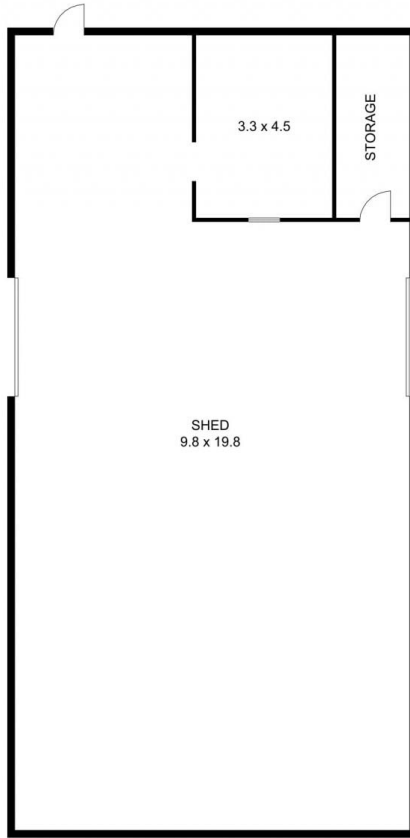
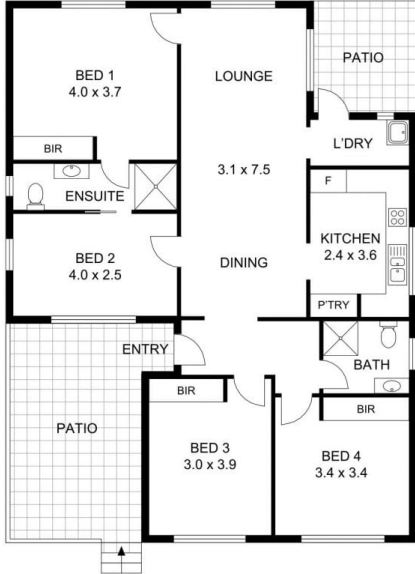
This impressive estate enjoys wonderful elevated views across towards the Blue Mountains and is a perfect gently undulating arable parcel in a prime location that offers a sought after opportunity to build and create a lifestyle with plenty of room for a tennis court and swimming pool.

Close proximity to local shops schools and amenities.

? 6.6 Acres fully arable estate

[For full version visit the website](#)

**Lumby Real Estate**  
02 9651 2788



# 1 Blacks Road, Arcadia

Disclaimer: Dimensions are approximate and should only be used as a guide they are not to scale and no liability will be accepted