



166 Glenhaven Road Glenhaven NSW

3 1 2

\$ 3,200,000

This tightly held property is a prime offering with future potential and numerous options. Extend on the existing home, build a secondary residence with plans available, build a new home or simply live in the house or rent out for now.

Type : House
Land Size : 21853 sqm
View : <https://www.lumby.com.au/7953383>

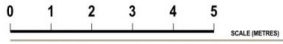
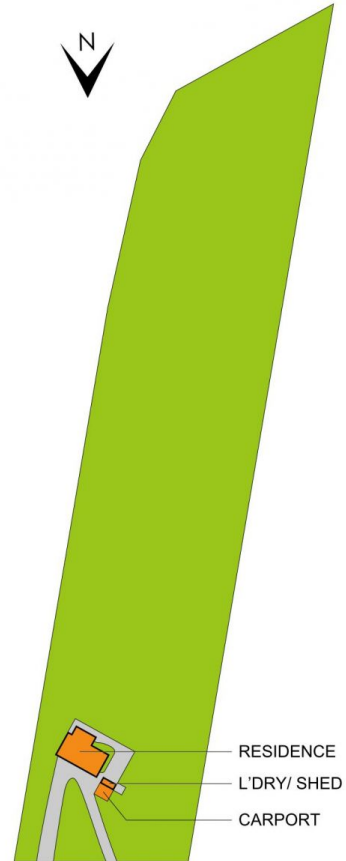
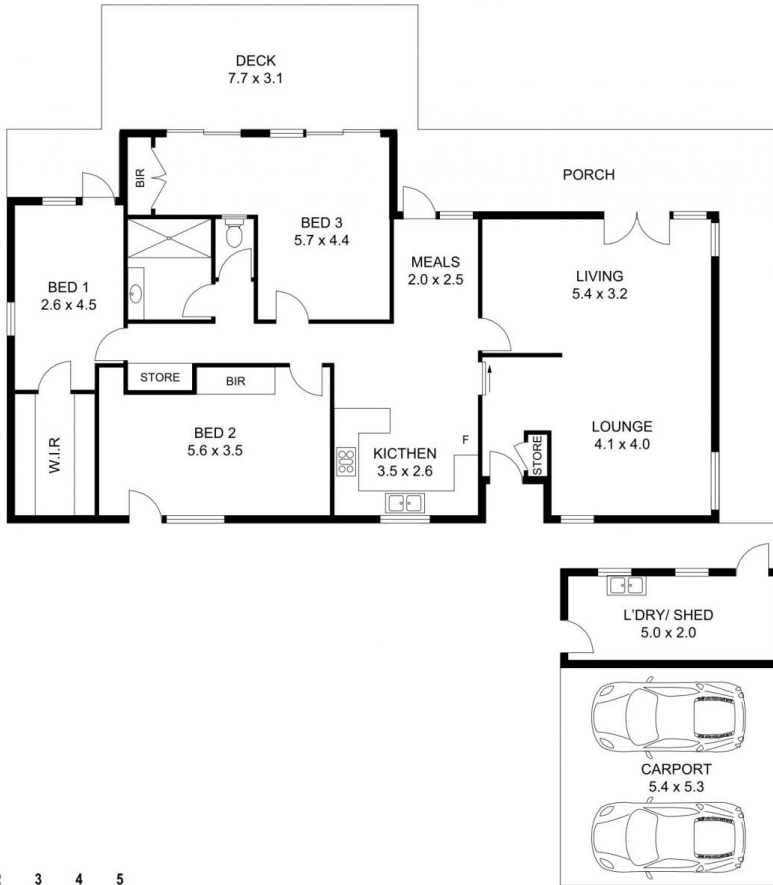
This private family home positioned on 5.4 acres is a wonderful opportunity to reside in a premium location with potential of future development.

This 5.4 acre estate is in RU6 zoning which could become future development STC.

Potential for future development in RU6 zoning, permitted with consent.

[For full version visit the website](#)

Kate Lumby
02 9651 2788



166 Glenhaven Road, Glenhaven

Disclaimer: Floor plans and site plans are intended as a guide only. They are not part of any legal document or title and are subject to errors, omission, and inaccuracies and should not be used as reference. Sizes and dimensions are approximate only. Interested parties should make their own enquiries. **Floor plan by : Sync Studios Pty Ltd**

Lumby Hampson
Real Estate Since 1968